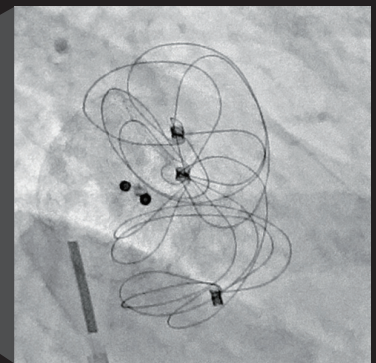
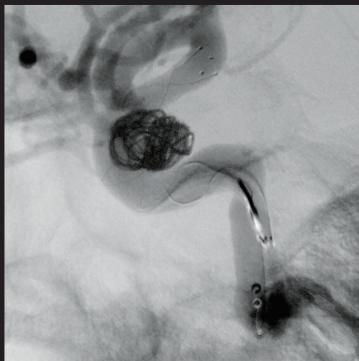


Canon

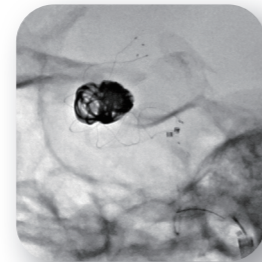
Alphenix

See more, Do more with Less Using High-Definition (Hi-Def) Technology

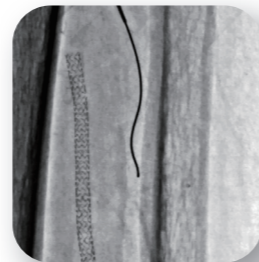
First True Hi-Def for all X-ray guided therapies



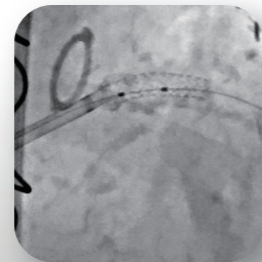
Visualization Like Never Before with the World's First High Definition Mode for universal / multi-use / interdepartmental



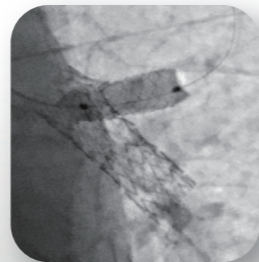
Neurology



Radiology

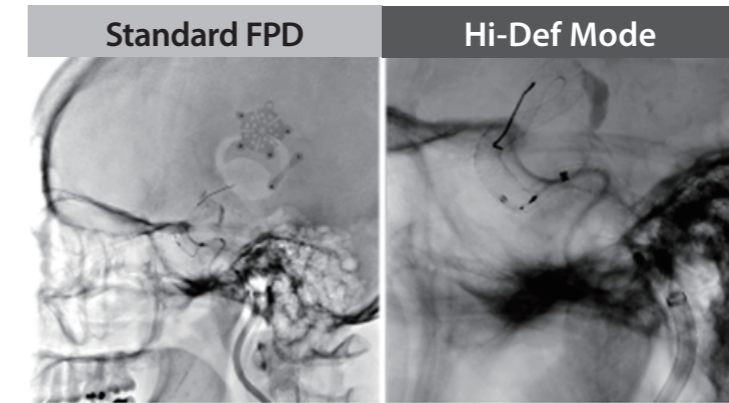


Cardiology



Pediatric Cardiology

Initial Hi-Def feedback from wide range of clinical usage

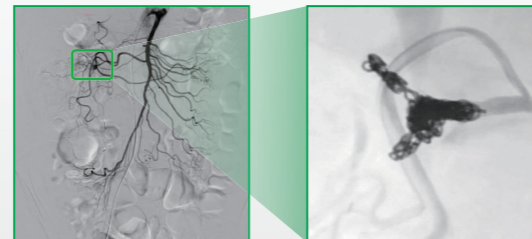


“ During the critical parts of the case when you deploy a complex intravascular device – for example, a coil, a stent, a flow diverter, an intrasaccular flow disruptor, anything where you really need to appreciate how the device is behaving in a small space and it is of critical implication – there’s nothing that comes close to the ability to visualize these implements than Hi-Def technology. ”

Adnan SIDDIQUI, M.D., Ph.D. FACS FAHA FAANS
Vice Chairman and Professor
University at Buffalo



The Alphenix interventional systems feature the all-new and exclusive high definition (Hi-Def) imaging detector with the highest spatial resolution available, helping clinicians see fine details with increased confidence.



12" x 12" FOV

1.5" x 1.5" FOV



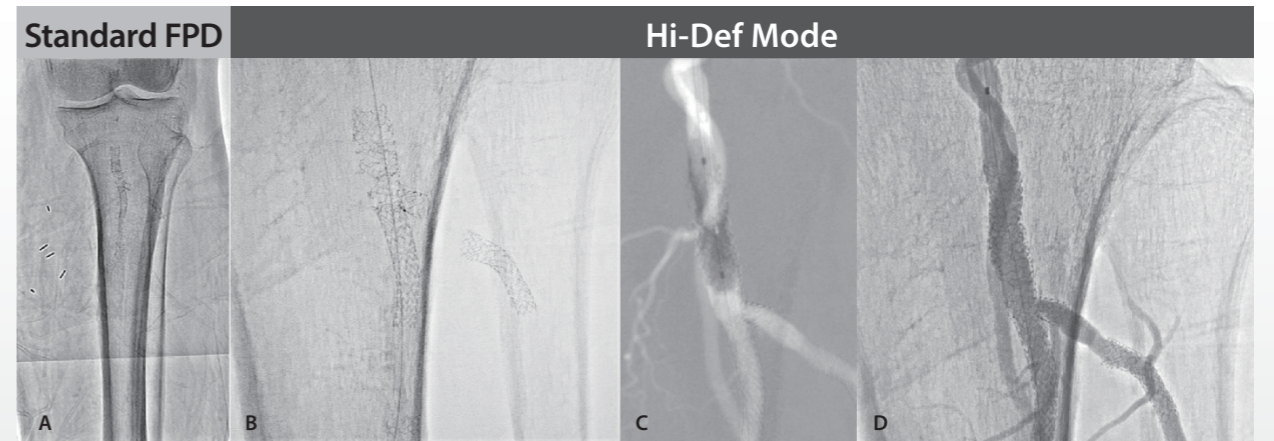
Hi-Def is available on our Sky+, 4D CT, Biplane, and Core+ systems, for multiple clinical departments sharing one economical and efficient universal system.



Improved spatial resolution increases visualization, which can improve imaging efficiencies and may reduce overall patient dose by up to 9%.*



With the ability to use high-definition imaging without compromise in a variety of clinical departments, Alphenix is the best system from the perspective of return on investment.



The 3" x 3" Hi-Def mode (B) showing complete fracture and avulsion of one of the previously placed stents which was not visible under the 12" x 12" FOV FPD mode (A). The Hi-Def mode was subsequently used to accurately size and precisely deploy a stent across the stenosis within the popliteal artery (C, D).

“ The Hi-Def mode also revealed features of the previously placed stents that were not seen by FPD, for example, complete fracture and avulsion of one of the stents. ”

Salman A. Arain, M.D., FACC, FSCAI
The University of Texas Health Science Center at Houston

*Reference RSNA 2020 abstract

The clinical results, performance and views described in the testimonials are the experience of the clinician. Results may vary due to clinical setting, patient presentation and other factors. Many factors could cause the actual results and performance of Canon's product to be materially different from and of the aforementioned.

Hi-Def Configuration

Floor-mounted system

N C V



Core+
12 × 12



Biplane
12 × 12 + 12 × 12

N C R V



Core+
12 × 16



Biplane
12 × 16 + 12 × 12

NEW

NEW

Ceiling-mounted system

R C



Sky+
12 × 16



4D CT
12 × 16

- N** Neurology
- C** Cardiology
- R** Radiology
- V** Vascular

CANON MEDICAL SYSTEMS CORPORATION
<https://global.medical.canon>

©Canon Medical Systems Corporation 2021. All rights reserved.
Design and specifications are subject to change without notice.
MCAVL0020EA 2021-11 CMSC/Produced in Japan

Canon Medical Systems Corporation meets internationally recognized standards for Quality Management System ISO 9001, ISO 13485. Canon Medical Systems Corporation meets the Environmental Management System standard ISO 14001.

Alphenix, DoseRite and Made for Life are trademarks of Canon Medical Systems Corporation.

Made For life